

CS230 (A71902)

PARTS CATALOG

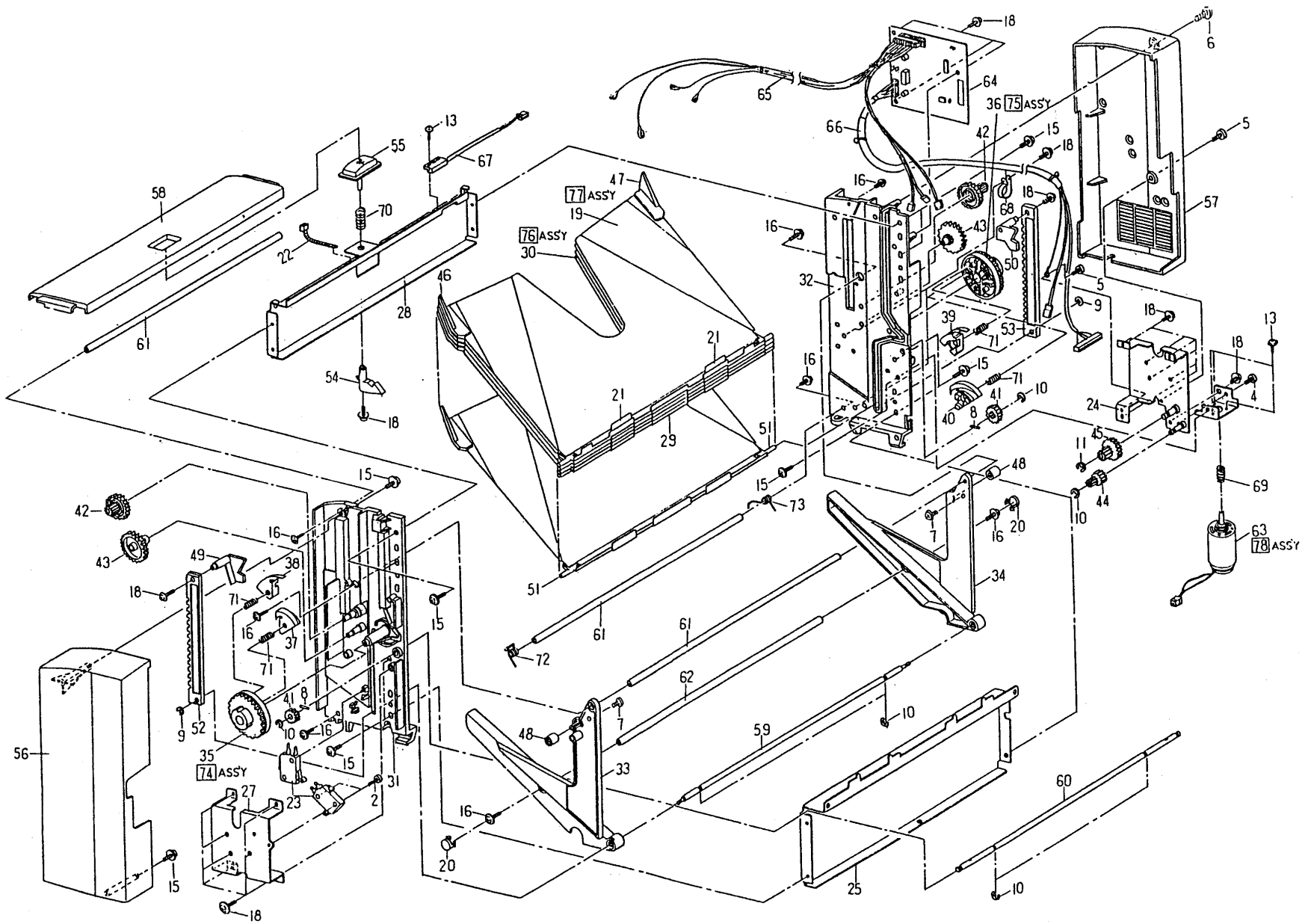
INTRODUCTION

This chapter instructs you the numbers and names of this parts on this machine.

INDEX to PARTS CATALOG

1.SORTER SECTION (A71902)	2
2.SORTER ADAPTER (A71902)	4
PARTS INDEX	7

1. SORTER SECTION (A71902)



1. SORTER SECTION (A71902)

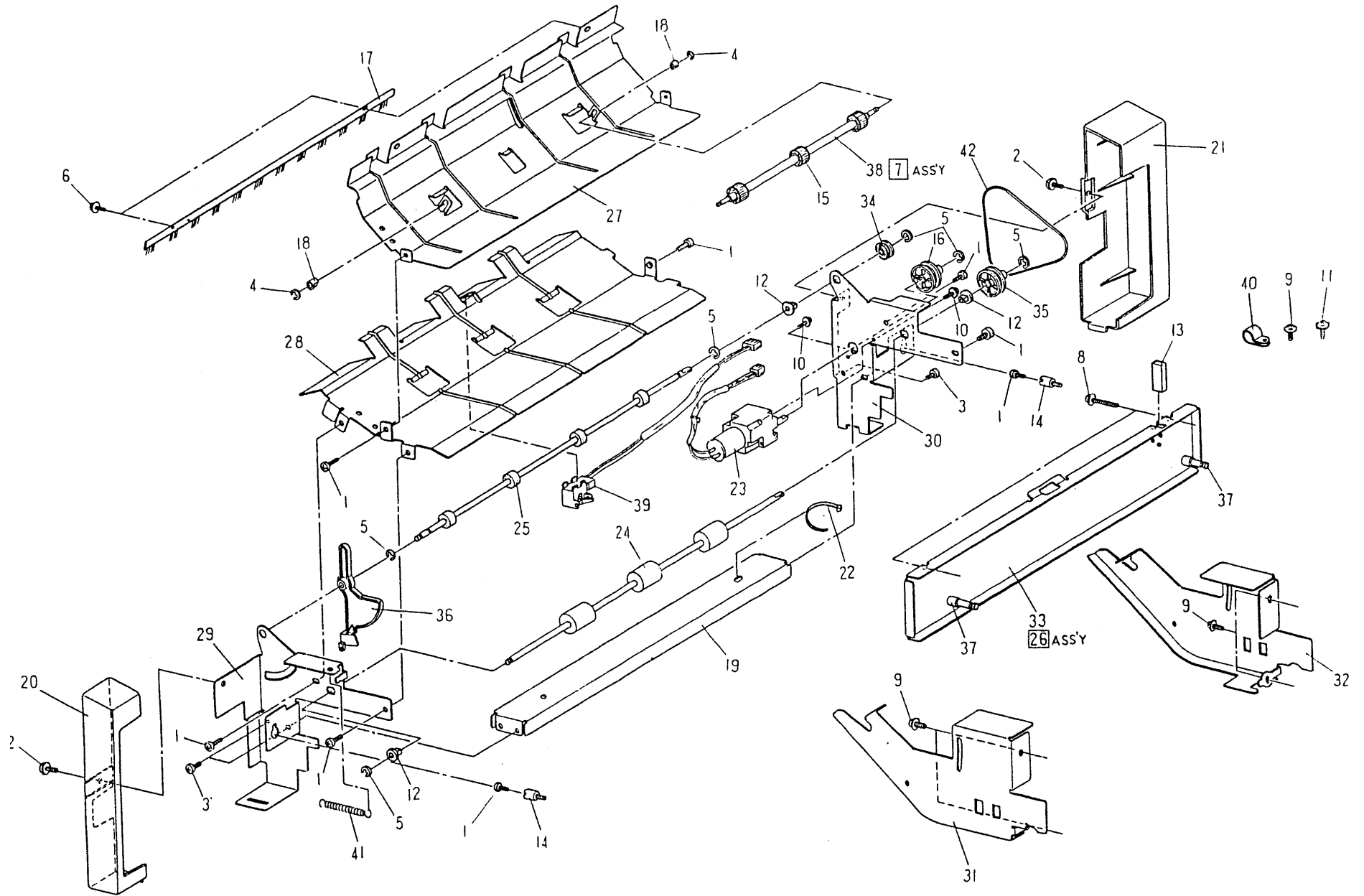
Index No.	Part No.	Description	Q'ty Per Assembly
1	0313 0060W	Philips Pan Head Screw - M3x6	
2	0313 0120W	Philips Pan Head Screw - M3x12	
3	0314 0060W	Philips Pan Head Screw - M4x6	
4	0314 0080M	Philips Pan Head Screw - M4x8	
5	0354 0080F	Screw - M4X8	
6	0354 0102F	Mold Tap Scr:M4x10	
7	0344 0040F	Truss Bolt:M4x4	
8	0632 0100G	Pin - 2x10mm	
9	0720 0030E	Retaining Ring - M3	
10	0720 0040E	Retaining Ring - M4	
11	0720 0060E	Retaining Ring - M6	
12	0730 0040W	Set Screw:M3x4	
13	0960 3005W	Philips Flange Screw - M3 X 5	
14	0960 4006W	Philips Flange Screw - M4x6	
15	0960 4008W	Philips Flange Screw - M4x8	
16	0960 4010W	Philips Flange Screw - M4x10	
17	0964 4010W	Tapping SCR Washer:d:M4x10	
18	0965 4010W	Tapping Screw With Flatwasher-m4x10	
19	A719 3001	Tray:Middle:Painted	
20	A719 3002	Cap	
21	A719 3013	Top Bin Mylar	
22	A719 3003	Band:100mm	
23	A719 3004	Micro Switch	
24	A719 3005	Ass'y:Bracket:Rear	
25	A719 3008	Shield Plate	
26	A719 3009	Bracket:Motor	
27	A719 3010	Bracket:Gear:Front	
28	A719 3011	Stay:Frame	
29	A719 3012	Stopper:Bin	
30	A719 3014	Tray:Middle:Modified	
31	A719 3015	Side Plate:Front	
32	A719 3016	Side Plate:Rear	
33	A719 3017	Bottom:Support:Front	
34	A719 3018	Bottom:Support:Rear	
35	A719 3019	Transfer Wheel:Front	

Index No.	Part No.	Description	Q'ty Per Assembly
36	A719 3020	Transfer Wheel:Rear	
37	A719 3021	Insert Wheel:Front:Left	
38	A719 3022	Insert Wheel:Front:Right	
39	A719 3023	Insert Wheel:Rear:Left	
40	A719 3024	Insert Wheel:Rear:Right	
41	A719 3025	Gear:Drive	
42	A719 3026	Gear:Lift:Middle	
43	A719 3027	Gear:Lift:Pinion	
44	A719 3028	Gear:Worm:Motor	
45	A719 3029	Gear:Middle Motor	
46	A719 3030	Cam Bin:Front	
47	A719 3031	Cam Bin:Rear	
48	A719 3032	Roller:Support	
49	A719 3033	Safety Lever:Front	
50	A719 3034	Safety Lever:Rear	
51	A719 3035	Trunnion:20B	
52	A719 3036	Rack:Lift:Front	
53	A719 3037	Rack:Lift:Rear	
54	A719 3038	Lock:Mounting	
55	A719 3039	Button:Jam	
56	A719 3040	Cover:Front	
57	A719 3041	Cover:Rear	
58	A719 3042	Cover:Top	
59	A719 3043	Shaft:Lift	
60	A719 3044	Shaft:Drive	
61	A719 3045	Shaft:Support	
62	A719 3046	Shaft:Frame:Support	
63	A719 3048	Motor:Bin:24VDC	
64	A719 3049	Ass'y:PCB	
65	A719 3050	Ass'y:Main Harness	
66	A719 3051	Ass'y:I/F Harness	
67	A719 3052	Reed Switch	
68	A719 3053	Cable:Lamp 6n	
69	A719 3054	Worm:Motor	
70	A719 3055	Spring:Buttom	

Index No.	Part No.	Description	Q'ty Per Assembly
71	A719 3056	Spring:Transfer Wheel	
72	A719 3057	Spring:Torsion:Front	
73	A719 3058	Spring:Torsion:Rear	
74	A719 3006	Ass'y:Transfer Wheel:Front	
75	A719 3007	Ass'y:Transfer Wheel:Rear	
76	A719 3059	Tray Middle Ass'y:20B	
77	A719 3060	Tray Top Ass'y:20B	
78	A719 3047	Ass'y:Motor:SS22	

Index No.	Part No.	Description	Q'ty Per Assembly

2. SORTER ADAPTER (A71902)



2. SORTER ADAPTER (A71902)

Index No.	Part No.	Description	Q'ty Per Assembly
1	0314 0060W	Philips Pan Head Screw - M4x6	
2	0344 0080D	Philips Truss Head Screw - M4x8	
3	0434 0060W	Tapping Screw - M4x6	
4	0720 0030E	Retaining Ring - M3	
5	0720 0040E	Retaining Ring - M4	
6	0960 3006W	Philips Flange Screw - M3x6	
7	A719 4014	Upper Roller Ass'y	
8	0960 4024W	PC Bolt.Washerd:M4x24	
9	0964 4006W	Tapping Screw With Flat Washer-M4x6	
10	0965 3008W	Tapping Screw With Flat Washer-M3x8	
11	0965 4010W	Tapping Screw With Flatwasher-M4x10	
12	A719 4001	Dry Bearing:6.0 Dia	
13	A719 4002	Magnet	
14	A719 4003	Stud Screw	
15	A719 4004	Roller:Idle	
16	A719 4005	Pulley:6.0 Dia X 25	
17	A719 4032	Static Brush	
18	A719 4006	Bushing:Dia 4	
19	A719 4007	Stay:Lower	
20	A719 4008	Cover:Front	
21	A719 4009	Cover:Rear	
22	A719 4010	Band:100mm	
23	A719 4011	Motor:Feed	
24	A719 4012	Roller:Interface:1'st	
25	A719 4013	Roller:Interface:2'nd	
26	A719 4015	Ass'y:Stay:Mount	
27	A719 4016	Guide Upper	
28	A719 4017	Guide Lower	
29	A719 4018	Side Plate Front	
30	A719 4019	Side Plate Rear	
31	A719 4020	Plate:Hinge:Front	
32	A719 4021	Plate:Hinge:Rear	
33	A719 4022	Stay:Mount	
34	A719 4023	Pulley:Feed:Phi 6 X Phi 14	
35	A719 4024	Pulley:Feed:Phi 6 X Phi 21	

Index No.	Part No.	Description	Q'ty Per Assembly
36	A719 4025	Cam:Interface	
37	A719 4026	Stud	
38	A719 4027	Shaft:Upper:Roller	
39	A719 4028	Ass'y:Sensor:Paper	
40	A719 4029	Cable Clamp:5n	
41	A719 4030	Spring:Cam	
42	A719 4031	Round Belt:3.0 Dia X 250l	

PARTS INDEX

Part No.	Description	Page and Index No.
A719 3001	Tray:Middle:Painted	5- 19
A719 3002	Cap	5- 20
A719 3003	Band:100mm	5- 22
A719 3004	Micro Switch	5- 23
A719 3005	Ass'y:Bracket:Rear	5- 24
A719 3006	Ass'y:Transfer Wheel:Front	5- 74
A719 3007	Ass'y:Transfer Wheel:Rear	5- 75
A719 3008	Shield Plate	5- 25
A719 3009	Bracket:Motor	5- 26
A719 3010	Bracket:Gear:Front	5- 27
A719 3011	Stay:Frame	5- 28
A719 3012	Stopper:Bin	5- 29
A719 3013	Top Bin Mylar	5- 21
A719 3014	Tray:Middle:Modified	5- 30
A719 3015	Side Plate:Front	5- 31
A719 3016	Side Plate:Rear	5- 32
A719 3017	Bottom:Support:Front	5- 33
A719 3018	Bottom:Support:Rear	5- 34
A719 3019	Transfer Wheel:Front	5- 35
A719 3020	Transfer Wheel:Rear	5- 36
A719 3021	Insert Wheel:Front:Left	5- 37
A719 3022	Insert Wheel:Front:Right	5- 38
A719 3023	Insert Wheel:Rear:Left	5- 39
A719 3024	Insert Wheel:Rear:Right	5- 40
A719 3025	Gear:Drive	5- 41
A719 3026	Gear:Lift:Middle	5- 42
A719 3027	Gear:Lift:Pinion	5- 43
A719 3028	Gear:Worm:Motor	5- 44
A719 3029	Gear:Middle Motor	5- 45
A719 3030	Cam Bin:Front	5- 46
A719 3031	Cam Bin:Rear	5- 47
A719 3032	Roller:Support	5- 48
A719 3033	Safty Lever:Front	5- 49
A719 3034	Safty Lever:Rear	5- 50
A719 3035	Trunnion:20B	5- 51

Part No.	Description	Page and Index No
A719 3036	Rack:Lift:Front	5- 52
A719 3037	Rack:Lift:Rear	5- 53
A719 3038	Lock:Mounting	5- 54
A719 3039	Button:Jam	5- 55
A719 3040	Cover:Front	5- 56
A719 3041	Cover:Rear	5- 57
A719 3042	Cover:Top	5- 58
A719 3043	Shaft:Lift	5- 59
A719 3044	Shaft:Drive	5- 60
A719 3045	Shaft:Support	5- 61
A719 3046	Shaft:Frame:Support	5- 62
A719 3047	Ass'y:Motor:SS22	5- 78
A719 3048	Motor:Bin:24VDC	5- 63
A719 3049	Ass'y:PCB	5- 64
A719 3050	Ass'y:Main Harness	5- 65
A719 3051	Ass'y:I/F Harness	5- 66
A719 3052	Reed Switch	5- 67
A719 3053	Cable:Lamp 6n	5- 68
A719 3054	Worm:Motor	5- 69
A719 3055	Spring:Buttom	5- 70
A719 3056	Spring:Transfer Wheel	5- 71
A719 3057	Spring:Torsion:Front	5- 72
A719 3058	Spring:Torsion:Rear	5- 73
A719 3059	Tray Middle Ass'y:20B	5- 76
A719 3060	Tray Top Ass'y:20B	5- 77
A719 4001	Dry Bearing:6.0 Dia	5- 12
A719 4002	Magnet	5- 13
A719 4003	Stud Screw	5- 14
A719 4004	Roller:Idle	5- 15
A719 4005	Pulley:6.0 Dia X 25	5- 16
A719 4006	Bushing:Dia 4	5- 18
A719 4007	Stay:Lower	5- 19
A719 4008	Cover:Front	5- 20
A719 4009	Cover:Rear	5- 21
A719 4010	Band:100mm	5- 22

Part No.	Description	Page and Index No.
A719 4011	Motor:Feed	5- 23
A719 4012	Roller:Interface:1'st	5- 24
A719 4013	Roller:Interface:2'nd	5- 25
A719 4014	Upper Roller Ass'y	5- 7
A719 4015	Ass'y:Stay:Mount	5- 26
A719 4016	Guide Upper	5- 27
A719 4017	Guide Lower	5- 28
A719 4018	Side Plate Front	5- 29
A719 4019	Side Plate Rear	5- 30
A719 4020	Plate:Hinge:Front	5- 31
A719 4021	Plate:Hinge:Rear	5- 32
A719 4022	Stay:Mount	5- 33
A719 4023	Pulley:Feed:Phi 6 X Phi 14	5- 34
A719 4024	Pulley:Feed:Phi 6 X Phi 21	5- 35
A719 4025	Cam:Interface	5- 36
A719 4026	Stud	5- 37
A719 4027	Shaft:Upper:Roller	5- 38
A719 4028	Ass'y:Sensor:Paper	5- 39
A719 4029	Cable Clamp:5n	5- 40
A719 4030	Spring:Cam	5- 41
A719 4031	Round Belt:3.0 Dia X 250l	5- 42
A719 4032	Static Brush	5- 17

Part No.	Description	Page and Index No
0313 0060W	Philips Pan Head Screw - M3x6	5- 1
0313 0120W	Philips Pan Head Screw - M3x12	5- 2
0314 0060W	Philips Pan Head Screw - M4x6	5- 1
0314 0060W	Philips Pan Head Screw - M4x6	5- 3
0314 0080M	Philips Pan Head Screw - M4x8	5- 4
0344 0040F	Truss Bolt:M4x4	5- 7
0344 0080D	Philips Truss Head Screw - M4x8	5- 2
0354 0080F	Screw - M4X8	5- 5
0354 0102F	Mold Tap Scr:M4x10	5- 6
0434 0060W	Tapping Screw - M4x6	5- 3
0632 0100G	Pin - 2x10mm	5- 8
0720 0030E	Retaining Ring - M3	5- 4
0720 0030E	Retaining Ring - M3	5- 9
0720 0040E	Retaining Ring - M4	5- 5
0720 0040E	Retaining Ring - M4	5- 10
0720 0060E	Retaining Ring - M6	5- 11
0730 0040W	Set Screw:M3x4	5- 12
0960 3005W	Philips Flange Screw - M3 X 5	5- 13
0960 3006W	Philips Flange Screw - M3x6	5- 6
0960 4006W	Philips Flange Screw - M4x6	5- 14
0960 4008W	Philips Flange Screw - M4x8	5- 15
0960 4010W	Philips Flange Screw - M4x10	5- 16
0960 4024W	PC Bolt.Washer:M4x24	5- 8
0964 4006W	Tapping Screw With Flat Washer-M4x6	5- 9
0964 4010W	Tapping SCR Washer:M4x10	5- 17
0965 3008W	Tapping Screw With Flat Washer-M3x8	5- 10
0965 4010W	Tapping Screw With Flatwasher-M4x10	5- 11
0965 4010W	Tapping Screw With Flatwasher-m4x10	5- 18